

Vakuum-Komponenten

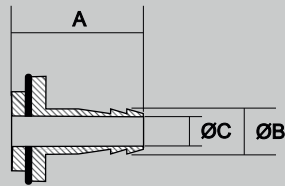
Adapter, Reduzierungen, Bauteile



Vakuum-Komponenten Übersicht

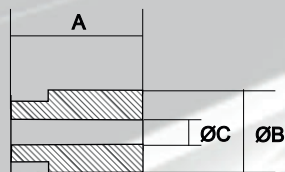
Adapter

▪ Außengewinde - Schlauch



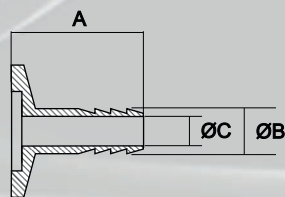
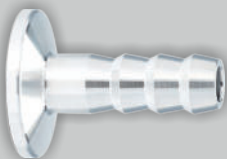
Art. Nr.	Anschluss	Material	A	B	C	D
VD81SW1	G1/4"	Messing, vernickelt	32	6 / 8	5	-

▪ Außengewinde - 7/16" UNF



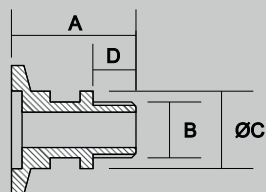
Art. Nr.	Anschluss	Material	A	B	C	D
ZG14UNF716	G 1/4"	Messing	35	19	10	-

▪ ISO-KF Flansch - Schlauch



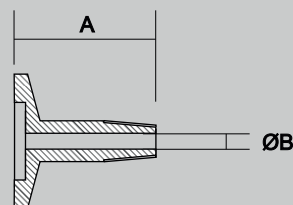
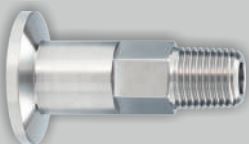
Art. Nr.	DN	Material	A	B	C	D
ZSW1612	16 KF	Edelstahl	40	12	8	-

▪ ISO-KF Flansch - Außengewinde



Art.-Nr.	DN	Material	A	B	C	D
ZG1614	16 KF	Edelstahl	29	G 1/4"	18	10

▪ ISO-KF-Flansch - NPT Außengewinde



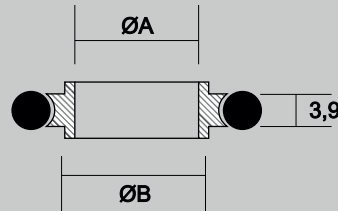
Art.-Nr.	DN	Material	A	B	C	D
ZNPT14	16 KF	Edelstahl	30	NPT 1/4"	-	-

Angaben in mm

Vakuum-Komponenten Übersicht

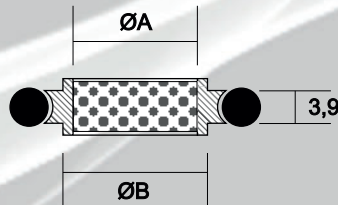
Dichtungselemente

▪ ISO-KF Zentrierdichtring



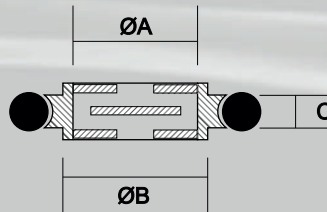
Art. Nr.	DN	Material	A	B	C	D
ZZR016	16	Edelstahl / FKM	16	17	-	-
ZZR025	25	Edelstahl / FKM	25	26	-	-
ZZR040	40	Edelstahl / FKM	40	41	-	-

▪ ISO-KF Zentrierdichtring mit Drahtfilter



Art. Nr.	DN	Material	A	B	C	D
ZZDF016	16	Edelstahl / FKM	16	17	-	-

▪ ISO-KF Zentrierdichtring mit Baffle



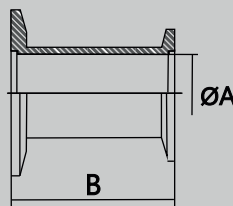
Art. Nr.	DN	Material	A	B	C	D
ZZCH016	16 KF	Edelstahl / FKM	16	17	3,9	-
ZZCH025	25 KF	Edelstahl / FKM	25	26	3,9	-
ZZCH040	40 KF	Edelstahl / FKM	40	41	3,9	-
ZZCH040CF	40 CF	Edelstahl	-	36	4,7	-

Angaben in mm

Vakuum-Komponenten Übersicht

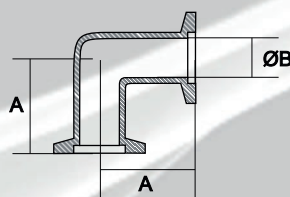
Rohrbauteile

▪ ISO-KF Reduzierstück



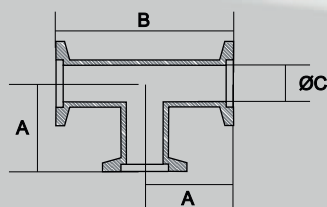
Art. Nr.	DN	Material	A	B	C	D
ZRRG2516	25	Edelstahl	16	28	-	-
ZRRG4025	40	Edelstahl	25	28	-	-

▪ ISO-KF Rohrbogen 90°



Art. Nr.	DN	Material	A	B	C	D
ZBA016	16	Aluminium	40	16	-	-
ZBS016	16	Edelstahl	40	16	-	-
ZBS025	25	Edelstahl	50	25	-	-
ZBS040	40	Edelstahl	65	40	-	-

▪ ISO-KF T-Stück

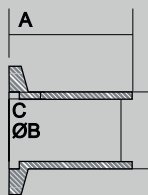
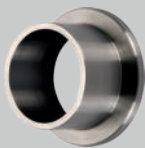


Art. Nr.	DN	Material	A	B	C	D
ZTA016	16	Aluminium	40	80	16	-
ZTS016	16	Edelstahl	40	80	16	-
ZTA025	25	Aluminium	50	100	24	-

Angaben in mm

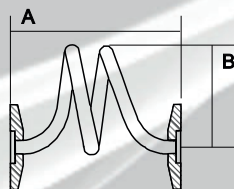
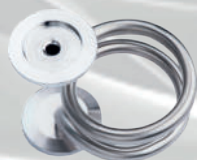
Vakuum-Komponenten Übersicht

▪ ISO-KF Anschweißflansch



Art. Nr.	DN	Material	A	B	C	D
ZSF016	16	Edelstahl 1.4301	26	20	2	-
ZSFL016	16	Edelstahl 1.4301	70	20	2	-
ZSF025	25	Edelstahl 1.4301	26	28	2	-
ZSFL025	25	Edelstahl 1.4301	70	28	2	-

▪ Rohrspirale



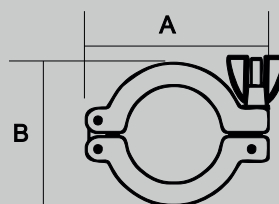
Art. Nr.	DN	Material	A	B	C	D
ZSST016	16	Edelstahl	60	55	-	-
ZSST025	25	Edelstahl	60	55	-	-

Angaben in mm

Vakuum-Komponenten Übersicht

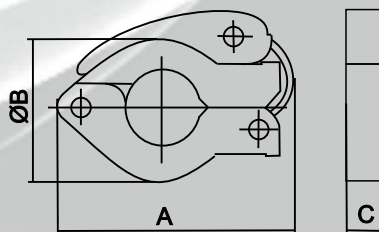
Verbindungselemente

▪ ISO-KF Normalspannring, Aluminium



Art. Nr.	DN	A	B	C	D
ZSR1016	10 / 16	62	41	-	-
ZSR2025	20 / 25	72	52	-	-
ZSR3240	32 / 40	90	68	-	-

▪ ISO-KF Schnellspannring, Aluminium / Kunststoff



Art. Nr.	DN	A	B	C	D
ZSSR1016	10 / 16	68	45	16	-
ZSSR2025	20 / 25	80	55	16	-
ZSSR3240	32 / 40	98	70	16	-

Angaben in mm